



萊英家  
Let UK Home

2 Bedrooms

Flat

Located in London

£3,800 Per Month



[info@letukhome.co.uk](mailto:info@letukhome.co.uk)

<https://www.letukhome.co.uk/>

02045348146



# 44 Denver Building 6 Malthouse Road

London | | SW11 7BY



Let UK Home are excited to offer this spectacular 2 bedroom apartment in the heart of Denver Building part of the Lexington Gardens.

This property comprises a large bright open plan kitchen and living room leading to a large private balcony with great views, two double bedrooms with wardrobe (master en-suite), a large family sized bathroom and ample storage.

The apartment has a 24-hour concierge service, gym facilities, a private cinema, a private residents' gymnasium, a children's play area, and a storage room.

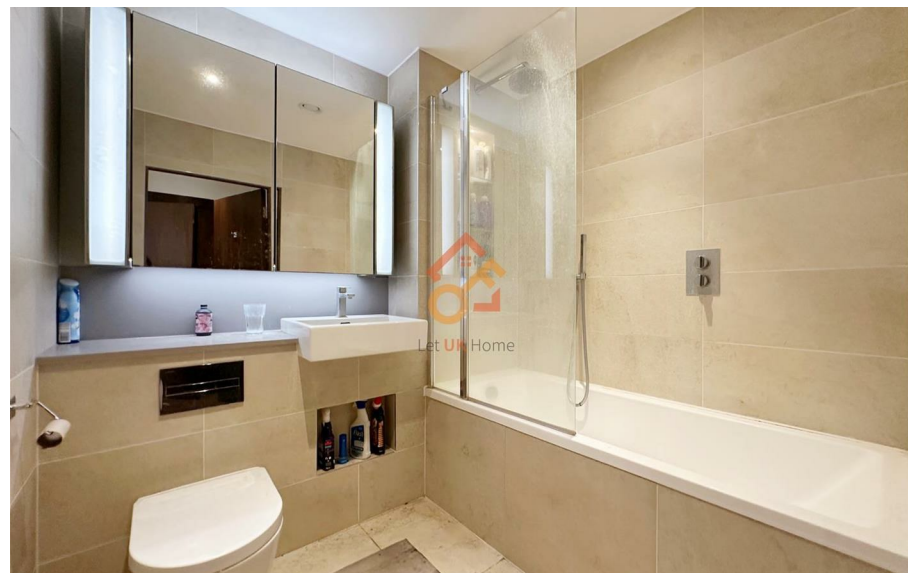
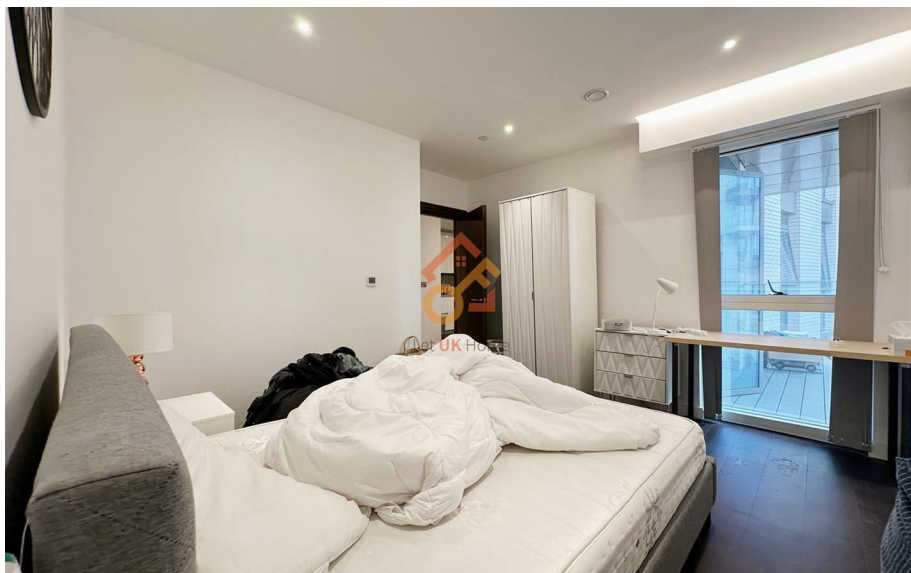
Centered around New Nine Elms Park, it is surrounded by a variety of top restaurants, ingenious cafes and luxury shopping malls. If the shopping center at Battersea Power Station, with more than 100 shops/restaurants/entertainment venues, cannot satisfy you, then nearby King's Road, Sloane Square and Knights Bridge offer more urban life enjoyment.

# 44 Denver Building 6 Malthouse Road

## £3,800 Per Month



- 4th Floor
- 24h Security
- Cinema & Game Room
- Concierge Service
- The Gym





APARTMENT LG15		
Kitchen/Living/Dining	5.700m x 4.996m	18'8" x 16'5"
Bedroom 1	4.030m x 2.745m	13'3" x 9'0"
Bedroom 2	3.600m x 3.140m	11'10" x 10'4"



6/F Two Kingdom Street  
London  
W2 6BD

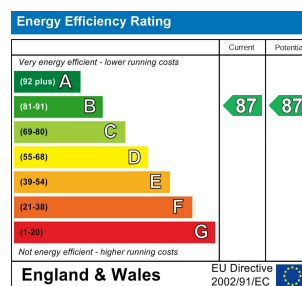
02045348146

info@letukhome.co.uk

**Council Tax Band: F**

**Local Authority:**

Agents Note: Whilst every care has been taken to prepare these particulars, they are for guidance purposes only. All measurements are approximate and are for general guidance purposes only and whilst every care has been taken to ensure their accuracy, they should not be relied upon and potential buyers/tenants are advised to recheck the measurements.



<https://www.letukhome.co.uk/>